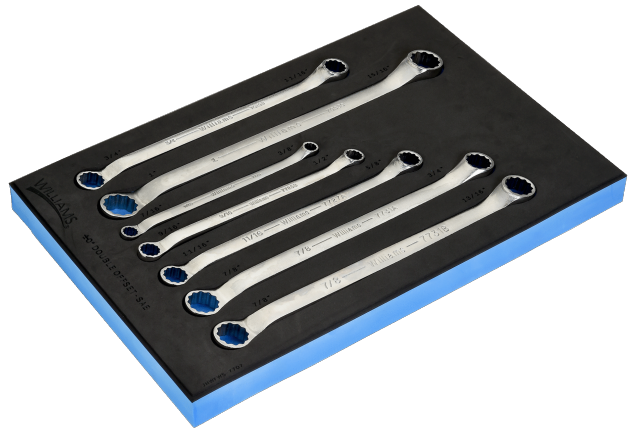








JHWFWS-7707
7 piece SAE Double Head 10°
Offset Box End Wrench Set in 1/3
Foam Drawer Insert



PRODUCT DETAILS

- Includes 7 pieces
- JHW7029B 11/16 x-3/4 12-Point SAE Double Head 10° Offset Box End Wrench
- JHW7033C 15/16 x 1 12-Point SAE Double Head 10° Offset Box End Wrench
- JHW7723 3/8 x-7/16" 12-Point SAE Double Head 10° Offset Box End Wrench
- JHW7725B 1/2 x-9/16 12-Point SAE Double Head 10° Offset Box End Wrench
- JHW7727A 5/8 x-11/16" 12-Point SAE Double Head 10° Offset Box End Wrench
- JHW7731A 3/4 x-7/8" 12-Point SAE Double Head 10° Offset Box End Wrench
- JHW7731B 13/16 x-7/8" 12-Point SAE Double Head 10° Offset Box End Wrench
- JHWFWS-770713FM 1/3 Foam Drawer Insert Only for 7 piece SAE Double Head 10° Offset Box End Wrench Set
- Foam is laser marked
- Modular design for tool organization in your tool storage
- Foam is easy to clean and resists oils, solvents and fuels
- Finger press the end of the tool for easy retrieval
- Sets in foam are flexible and keep your tools organized
- Two color foam provides visual control to find tools easily

PRODUCT ATTRIBUTES

Product				
JHWFWS-7707	11-5/8 in	17-3/8 in	1-3/8" in	3.9 lb